

Bartels Busack Pet Hospital

Barks & Mews Quarterly News

Fall 2009

6270 State Rd. Parma, OH 44134 (440) 845-7141

www.bartelsbusackpethospital.com We are on facebook!



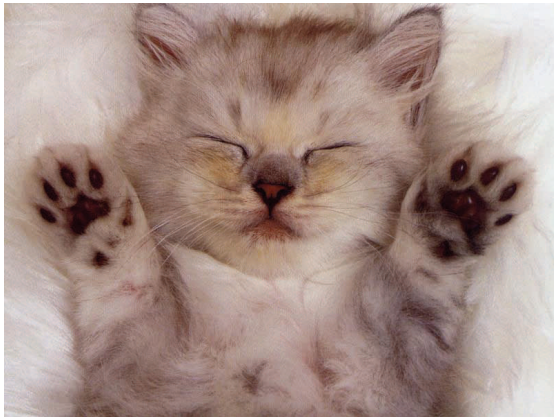
If ever there is tomorrow when we're not together.. there is something you must always remember. You are braver than you believe, stronger than you seem, and smarter than you think. But the most important thing is, even if we're apart... I'll always be with you.

- Winnie the Pooh

The Forgotten Feline: A Health Update

Cats are the number one pet in the United States, more common even than dogs. However, cats are much less likely to visit the veterinarian, even when showing signs of illness.

Even housecats can catch diseases, especially as they become senior kitties. Routine exams and preventive care can easily identify intestinal parasites, dental disease, obesity, and other serious health issues. Many problems can be treated or managed to give your cats longer and healthier lives. Preventive care is also much cheaper than unchecked disease treatment, saving hundreds of dollars for you and sparing our pets of needless suffering.

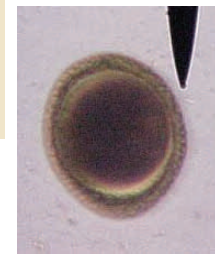


A wellness exam is also a good time to share with our clients new medical discoveries relevant to cat owners and to explain the importance of preventive medicine. We will make health suggestions specifically designed for you and your cats so that the quality of life will be as long and great as possible.

We love taking care of your cats and will take the time and tenderness needed to calm and ease them during the visit.



The Centers for Disease Control recently reported that 14% of people have roundworm infections! People can become infected with many of the intestinal parasites of dogs and cats. These can be detected with a fecal analysis. We recom-



end this simple test every 6 months to keep your pet and your family safe.

Roundworm egg

Seeking Support During Grief

While there is no standard duration for grief, the pain of loss normally eases with time. You can ease the process by applying healthy coping skills, such as talking with others about your memories and emotions and facing the grief, rather than trying to stay distracted or busy to avoid intense emotions. If your feelings of sorrow or guilt have not diminished after several weeks or if they impair your ability to engage in family, social, work or other functions, you may wish to reach out for support. Many people have found comfort in calling a pet loss support hotline, joining a pet loss support group, reading books about coping with the death of a pet, or talking with a trusted counselor or advisor.

-adapted from the original work of Jennifer Brandt, MSW, LISW, PhD, Ohio State University College of Veterinary Medicine



ASPCA Animal Poison Control Center Antifreeze Safety Tips



1. Always clean up antifreeze spills immediately.
2. Check your car regularly for leaks.
3. Always store antifreeze containers in clearly marked sealed containers and in areas that are inaccessible to your pets.
4. Never allow your pets to have access to the area when you are draining radiator fluid from your car.
5. Propylene glycol containing products are relatively less toxic form of antifreeze and should be used instead of conventional ethylene glycol antifreeze.
6. If you suspect your pet has ingested antifreeze or engine coolant, contact your veterinarian immediately!

Know the Signs of Aging

What signs of aging does your dog or cat show? Have you seen any changes in sleep pattern? Is your old friend pacing and vocalizing at night, or appear disorientated and lost? Maybe you find her staring into space or sometimes stuck in corners. Have you noticed any accidents in the house lately?

These behavioral signs may indicate aging of some of the internal organs and we may need to do blood tests to rule these in or out. However, they may be signs of senility and we can actually help improve your pet's quality of life with diet and, in some cases, medication.

Restlessness and pacing can indicate high blood pressure or hyperthyroidism, which is a hormonal disease. We offer blood pressure readings on older dogs and cats now and highly recommend doing this on an annual basis.

If your pet is showing signs of stiffness such as difficulty with stairs or climbing into the car we can check for arthritis. These old dears are also more likely to be grouchy as it hurts to move away from bouncy children. New and safer medications are now available for arthritis.

These above warning signs let you know it's time for a check up. Older pets need more frequent visits than young adults and the reward is improving your friend's golden years.



This newsletter is dedicated to Black Bean Taco.
July 16, 2009-August 16, 2009

Who can believe that there is no soul behind those
luminous eyes!
-Theophile Gautier